

Llanfyllin Group Practice -

Easy Read Leaflet





Llanfyllin Group Practice has three centres. We help over **11,000 patients**. Our main centre is in **Llanfyllin**. We also have centres in **Llanrhaeadr** and **Four Crosses**. All places have easy access for everyone.



You can call us for help. During the day, call **01691 648 054**. At night after 6:30pm, call **111**. For emergencies, call **999**.



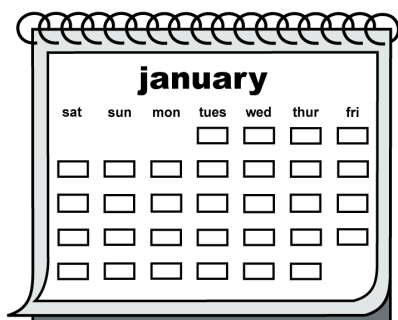
Our doctors and partners include **Dr. Melanie Plant**, **Dr. Ajith Kartha**, **Dr. Kate O'Dwyer**, **Dr. James Harris** and others. **Juliet Sagar** is our Managing Partner. **Tony Hewett** is our Pharmacist Partner.



You can find us online at **www.llanfyllingp.co.uk**. We also have a **Facebook page**. We share news and updates there.



To get your **prescriptions**, give us **3 working days** notice. You can order online, using the NHS Wales app, or in person. If you live near the chemist in Llanfyllin, collect your medicine from there.



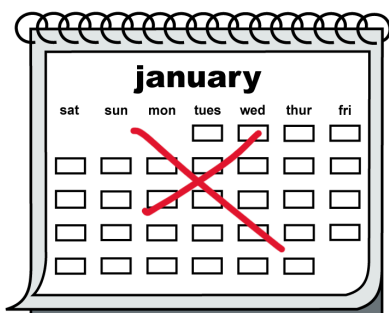
To book an **appointment**, use our **online Klinik form** or call **01691 648 054**. Our team will help you find the right person to talk to. You might not need to visit the surgery. We offer face-to-face and phone consultations. You can ask for a specific doctor if they are available.



For urgent help, **tell us as much as you can.** We will decide the best way to help you. This might be advice, a prescription, or a face-to-face visit to the practice.



We have a **Minor Injury Service.** You can visit us with minor injuries at **Llanfyllin surgery** from **8am to 6pm**, Monday to Friday. For help outside these times, visit **Victoria Memorial Hospital** in Welshpool.



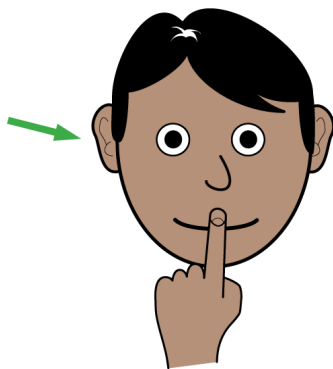
If you cannot come to an appointment, **please let us know.** This helps others get the help they need. You can cancel by **phone, online**, or using the **link in our text message reminders.**



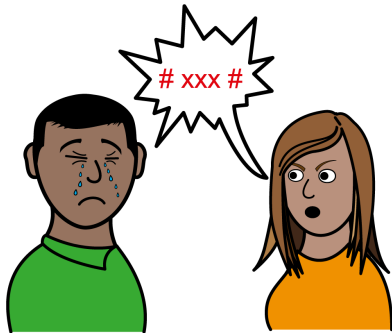
If you need a **home visit**, call us **before 12pm**. We will send a doctor if you are too ill to come in. Please try to find transport if you can.



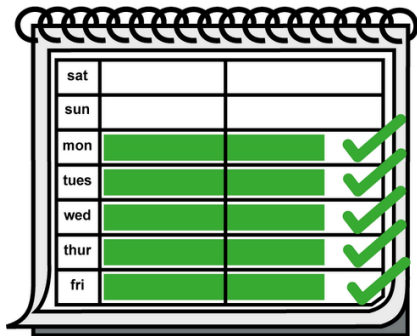
We are a **training practice**. We help doctors and students learn. You will always be asked if you agree to have a student in your appointment.



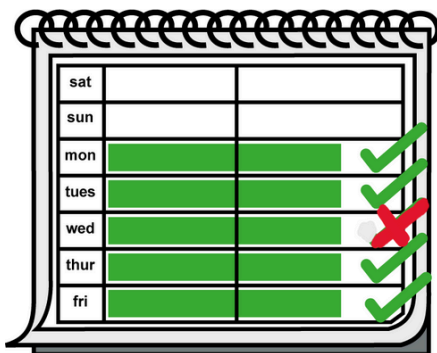
Your information is **private**. We will not share it without your permission. You can ask to see your records.



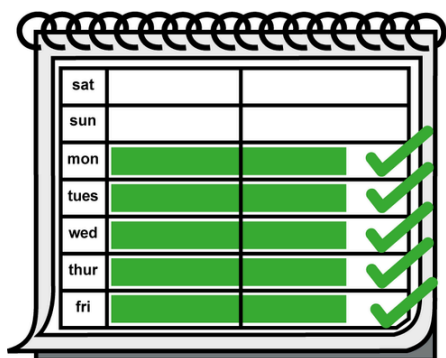
We have a **Zero Tolerance** policy. Our staff should not face violence or threats. We will remove patients from our list if they are abusive.



Our **Llanfyllin** centre is open **Monday to Friday, 8:30am to 6:30pm**. The dispensary is open until **6:30pm**. It is closed on weekends.



Our **Llanrhaeadr** centre is open **Monday, Tuesday, Thursday, and Friday, 8:30am to 5:30pm**. The dispensary is open until **5:30pm**. It is closed on Wednesdays and weekends.



Our **Four Crosses** centre is open **Monday to Friday, 8:30am to 5:30pm**. The dispensary is open until **5:30pm**. It is closed on weekends.

Last Updated 14/01/2026